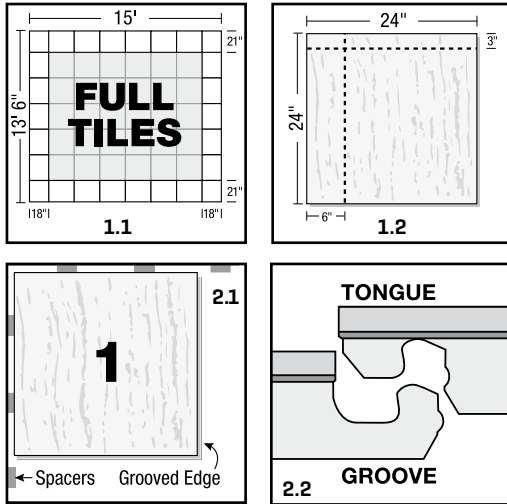
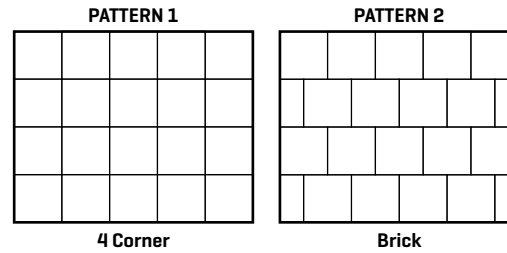


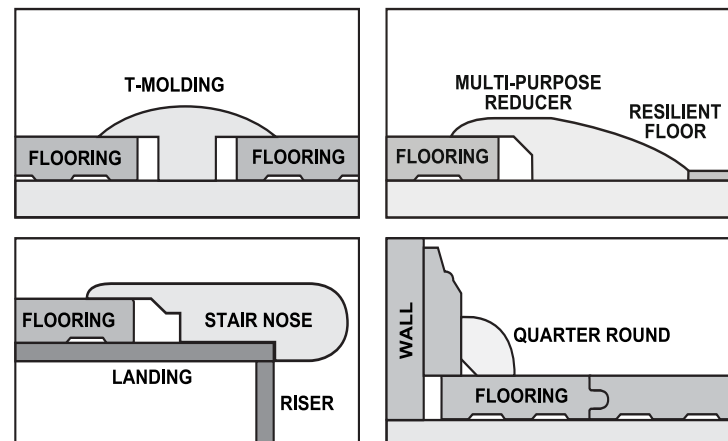
Schritt/Étape/Step 1



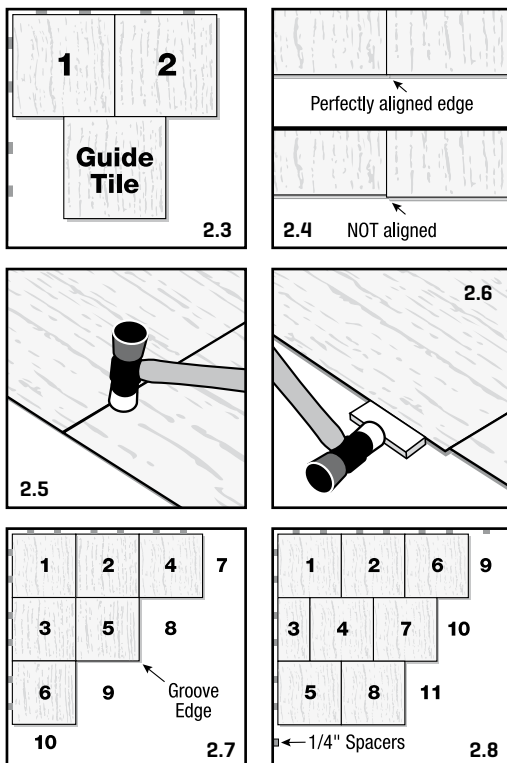
Vorbereitung für die Installation Préparation à l'installation Preparing for installation



Koordinierende Formteile Moulures coordonnées Coordinating moldings

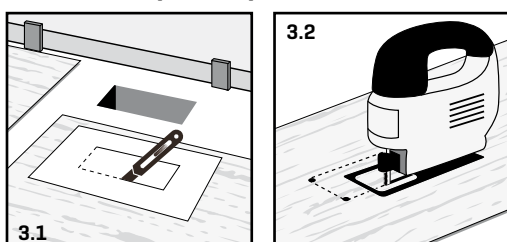


Schritt/Étape/Step 2



Weitere Anweisungen finden Sie unter www.hwzi.ch.
Pour d'autres instructions, visitez www.hwzi.ch.
For further instructions visit www.hwzi.ch.

Schritt/Étape/Step 3



HWZ International AG
Untere Gründlistrasse 23
6055 Alpnach Dorf
Switzerland
+41 41 672 72 50
[hwzi.ch](http://www.hwzi.ch)